

**do more** than you ever thought possible with best-in-class copy, print, scan and fax features



#### High performance features

- > 55/62/70 ppm print speed
- > 600 dpi resolution
- > 150-sheet Duplex Single Pass Feeder
- > Scan² Technology scans both sides of a 2-sided document in one pass—minimizing paper misfeeds
- > TIFF and PDF Direct Printing offer enhanced efficiency
- > Duplex Printing on up to 110# index from three different trays
- > Standard Tandem Printing “via the network” for double the productivity—up to 140 ppm with two AR-M700 IMAGERS

#### Network device and data security

- > Confidential Printing with 5-digit PIN code access
- > User Authentication to control network scanning activity
- > IP/MAC Address Filtering
- > Optional Data Security Kit with 128-bit encryption (available Summer 2004)

#### Document workflow software

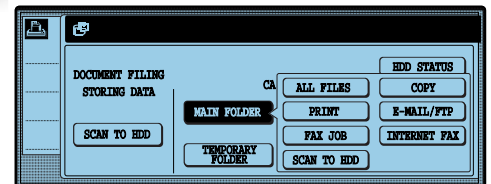
- > Integrate scanned documents into your everyday workflow with Sharpdesk™ software (optional Network Expansion Kit required)
- > Capture, organize, retrieve, and secure documents with Doc2NET, an enterprise-level solution that simplifies document archiving and storage (optional)
- > Automatically route documents to a fax or e-mail address, MFP, printer, or FTP site—plus customize forms, invoices, and other transactional documents with Reform Enterprise (optional)
- > Monitor and track printer usage with Equitrac's® PrintLog Accounting Server (optional)
- > Satisfy spikes in printing during crunch time with Callisto's™ Print Queue Management capabilities (optional)

#### Powerful network scanning capabilities

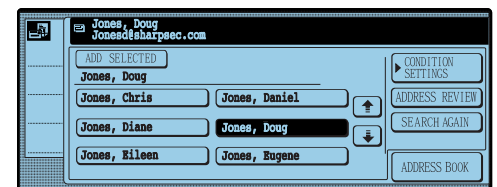
- > ImageSEND for quick, convenient scanning and distribution of files
- > Standard document filing of up to 20,000 pages with enhanced security controls
- > LDAP support (Lightweight Directory Access Protocol) minimizes manual entry of addresses
- > Super G3 facsimile with 2-second transmission time
- > PC faxing enables users to fax directly from a desktop application

#### Advanced LAN and enterprise management compatibilities

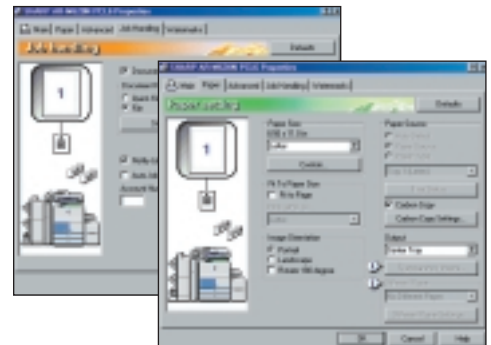
- > Extended compatibility for the enterprise with industry-leading EMS software providers ensure that Sharp IMAGERS work within your existing network seamlessly



Standard built-in document filing makes it easy to store your scanned images—and keep them secure.



With LDAP, users only need to enter the first few characters of the destination e-mail address—so sending a file is incredibly quick.



Print driver screens are easy to navigate, enabling users to select options from various tabs.



**Main Copier Specifications**

<b>Type:</b>	Console
<b>Print System:</b>	System (laser)
<b>Copy System:</b>	Dry electrostatic transfer system
<b>Originals:</b>	Sheets, bound documents
<b>Copy Size:</b>	Min. 5 1/2" x 8 1/2", Max. 11" x 17"
<b>Exposure System:</b>	OPC
<b>Developer System:</b>	Dry-type two-component magnetic brush development
<b>Paper Feed System:</b>	4 trays and bypass tray
<b>Fusing System:</b>	Heat roller
<b>Resolution:</b>	Scan: 600 x 600 dpi Output: 600 x 600 dpi
<b>Gradations:</b>	Scan: 256 levels Printing: 2 levels
<b>Originals:</b>	Sheets, bound documents
<b>Copy Paper:</b>	Plain paper and special papers
<b>Copy Sizes:</b>	Max. 11" x 17", min. 5 1/2" x 8 1/2"R, Postcard Image loss: Max. 11/64" (leading edge and trailing edge in total), max. 11/64" (along all other edges in total)
<b>Warm-Up Time:</b>	120 seconds or less
<b>First-Copy Time:</b>	3.9 seconds or less (when A4 size paper is fed horizontally from tray 1)
<b>Copy Ratio:</b>	Variable 25 to 400% in 1% increments Fixed Presets: 25%, 64%, 77%, 100%, 121%, 129%, 200%, 400%
<b>Continuous Copy:</b>	999 copies
<b>Hard Drive Capacity:</b>	40 GB; 16 GB partition for document filing capability
<b>Expansion DIMM Slot:</b>	1 slot (64 MB, 128 MB or 256 MB can be installed)
<b>Dimensions:</b>	28 43/64" (W) x 26 47/64" (D) x 46 15/16" (H) When bypass tray is extended: 49 47/64" (W) x 26 47/64" (D) x 46 15/16" (H)
<b>Weight:</b>	AR-M550U, AR-M550N, AR-M620U, AR-M620N: Approx. 408 lbs.
<b>Overall Dimensions:</b>	49 49/64" (W) x 26 47/64" (D)
<b>Required Power Supply:</b>	AC 120V, 60Hz, 16A
<b>Power Consumption:</b>	1.8 KW

**Network Scanner Expansion Kit Specifications (AR-NS3)**

<b>Maximum Original Size:</b>	11"x17"
<b>Two-sided Originals:</b>	Possible
<b>Optical Resolution:</b>	600 dpi
<b>Output Resolution:</b>	E-mail/FTP: 200 x 200, 300 x 300, 400 x 400, 600 x 600 dpi
<b>Internet-Fax:</b>	200 x 100, 200 x 200, 200 x 400, 400 x 400 dpi
<b>Output Modes:</b>	1 bit/pixel
<b>Half-tone Processing:</b>	Error dispersion (Black and white 150/200/300/400/600 dpi)
<b>File Format:</b>	E-mail/FTP File type: PDF/TIFF Compression mode: NONE/MH (G3)/MMR (G4) Internet-Fax File type: TIFF-F Compression Mode: MH(G3)/MMR(G4)
<b>File Creation Method:</b>	Specified pages per file/One file for all pages
<b>Scan Destinations:</b>	Send to FTP, Send to Desktop, Send to E-mail, Internet-Fax
<b>Supported Client</b>	Windows 95/Windows 98/Windows Me/Windows NT4.0/
<b>PC Operating Systems:</b>	Windows 2000/Windows XP
<b>Management System:</b>	Uses builtin Web server
<b>Web Browser:</b>	Internet Explorer 5.5 or later, Netscape Navigator 6.0 or later
<b>Network Protocol:</b>	TCP/IP, UDP/IP
<b>LAN Connectivity:</b>	10Base-T/100Base-TX
<b>Supported Mail System:</b>	Mail servers supporting SMTP
<b>Number of Destinations:</b>	999 maximum*
<b>Number of Senders:</b>	999 maximum

**Optional Large Capacity Tray Specifications**

<b>Paper Size:</b>	8 1/2" x 11" (the paper size can only be changed by a service technician)
<b>Paper Weight:</b>	16 to 28 lbs.
<b>Paper Capacity:</b>	(plain) 3,500 sheets 20 lbs.
<b>Dimensions:</b>	14 23/32" (W) x 21 31/64" (D) x 20 3/8" (H)
<b>Power Supply:</b>	Supplied from the main unit
<b>Weight:</b>	Approximately 63 lbs.

**Optional Punch Unit Specifications (AR-PN4B)**

<b>Hole Punching:</b>	2 or 3 holes
<b>Page Weight:</b>	16 to 140 lb. index

**Optional Two-Tray Finisher Specifications (AR-F15)**

<b>Number of Trays:</b>	2
<b>Paper Output:</b>	Face down output
<b>Paper Capacity:</b>	Upper paper tray/Middle paper tray: <b>Non-stapling:</b> 2,000 sheets of paper: 8 1/2" x 11", 5 1/2" x 8 1/2"R, 20 lbs. 1,000 sheets of paper: Sizes other than the above <b>Stapling:</b> 100 sets or 750 pages of 8 1/2" x 11" paper; 100 sets or 500 pages of other sizes of paper
<b>Paper Size:</b>	Upper paper tray/Middle paper tray: 11" x 17", 8 1/2" x 14", 8 1/2" x 13", 8 1/2" x 11", 8 1/2" x 11"R, 7 1/4" x 10 1/2"R, 5 1/2" x 8 1/2"R
<b>Page Weight:</b>	Upper paper tray/Middle paper tray: 16 to 68 lbs.
<b>Allowed Paper Sizes for Stapling:</b>	Upper paper tray/Middle paper tray: 11" x 17", 8 1/2" x 14", 8 1/2" x 13", 8 1/2" x 11", 8 1/2" x 11"R
<b>Maximum Number of Sheets for Stapling:</b>	Top left corner stapling: Portrait 50 sheets; Landscape 30 sheets Lower left corner stapling: Portrait 50 sheets; Landscape 30 sheets Center left stapling: Portrait 50 sheets; Landscape 30 sheets
<b>Stapling Positions:</b>	1 place at back, 1 place at front, one place at front (diagonal), 2 places
<b>Dimensions:</b>	32 1/64" (W) x 24 13/16" (D) x 45 9/32" (H)
<b>Weight :</b>	Approx. 113 lbs.

**Optional Saddle-Stitch Finisher Specifications (AR-F16)**

<b>Number of Trays:</b>	3
<b>Paper Output:</b>	Face down output
<b>Paper Capacity:</b>	Upper paper tray/Middle paper tray: <b>Non-stapling:</b> 2,000 sheets of paper: 8 1/2" x 11", 5 1/2" x 8 1/2"R 20 lbs. 1,000 sheets of paper: Sizes other than the above <b>Stapling:</b> 100 sets or 750 pages of 8-1/2" x 11" paper 100 sets or 500 pages of other sizes of paper Lower tray: Stapled print capacity is 11-15 sheets x 10 sets, 6-10 sheets x 20 sets, 1-10 sheets x 25 sets
<b>Paper Size:</b>	Upper paper tray/Middle paper tray: 11" x 17", 8 1/2" x 14", 8 1/2" x 13", 8 1/2" x 11", 8 1/2" x 11"R, 7 1/4" x 10 1/2"R, 5-1/2" x 8 1/2"R Lower tray: 11" x 17", 8 1/2" x 11"R, A3, B4, A4R
<b>Allowed Paper Sizes for Stapling:</b>	Upper paper tray/Middle paper tray: 11" x 17", 8 1/2" x 14", 8 1/2" x 13", 8 1/2" x 11", 8 1/2" x 11"R Lower tray: 11" x 17", 8 1/2" x 11"R
<b>Maximum Number of Sheets for Stapling:</b>	Top left corner stapling: Portrait 50 sheets; Landscape 30 sheets Lower left corner stapling: Portrait 50 sheets; Landscape 30 sheets Center left stapling: Portrait 50 sheets; Landscape 30 sheets Saddle-stitch: Landscape only 15 sheets
<b>Stapling Positions:</b>	1 place at back, 1 place at front, one place at front (diagonal), 2 places
<b>Dimensions:</b>	32 1/64" (W) x 24 13/16" (D) x 45 9/32" (H)
<b>Weight :</b>	Approx. 157 lbs.

\*A total of 999 destinations can be stored, including E-mail, FTP, Desktop, Internet-Fax, and Group destinations. Among these, a combined total of 100 Send to FTP and Desktop destinations can be stored.

Design and specifications subject to change without notice.

Sharp is a registered trademark of Sharp Corporation. All other trademarks and registered trademarks are property of their respective holders.



**SHARP ELECTRONICS CORPORATION**  
Sharp Plaza, Mahwah, NJ 07430-1163  
1-800-BE-SHARP  
[www.sharppusa.com](http://www.sharppusa.com)

